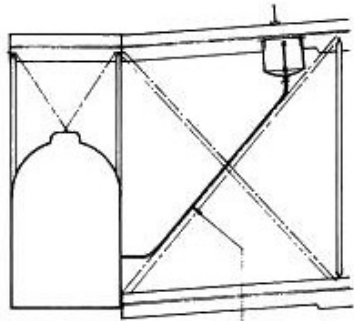
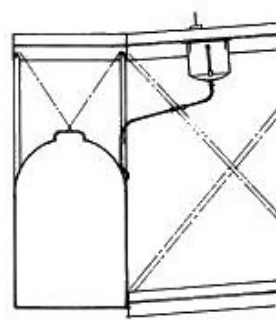


LATE 1915 - EARLY 1916.

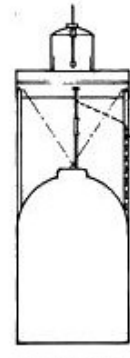


EARLY 1916

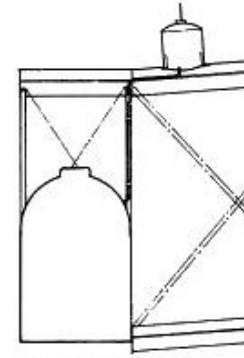
Fuel line bound to flying wires



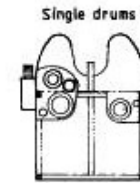
EARLY 1916.



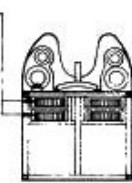
EARLY - MID 1916



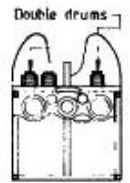
LATE 1916 - EARLY 1917



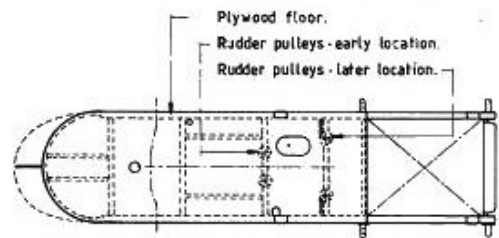
EARLY - MID 1916



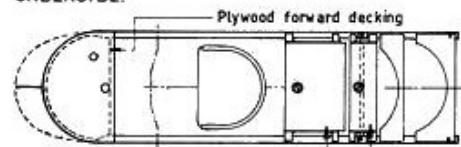
EARLY 1916



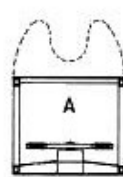
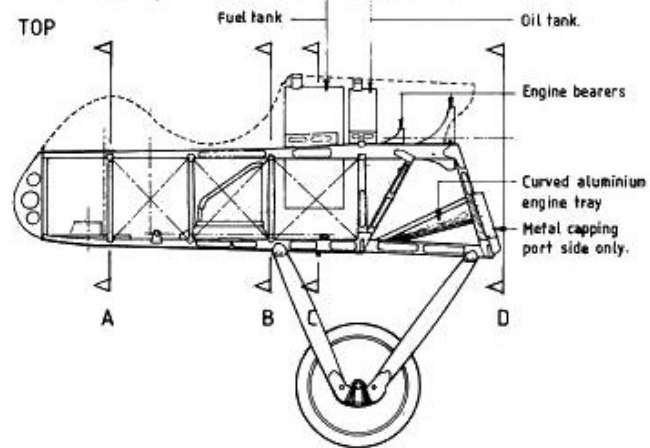
LATE 1916



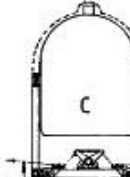
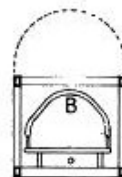
UNDERSIDE.



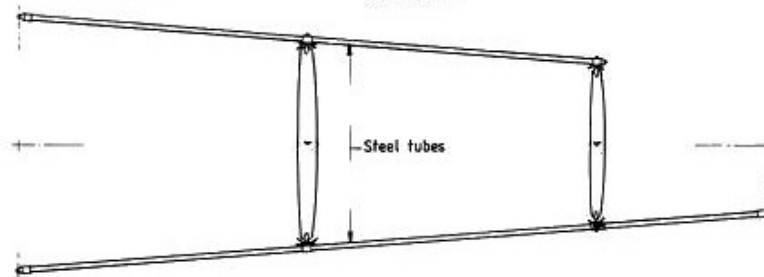
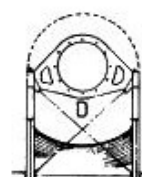
TOP



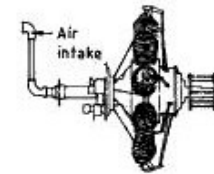
NACELLE SECTIONS.



To rudder
To ailerons



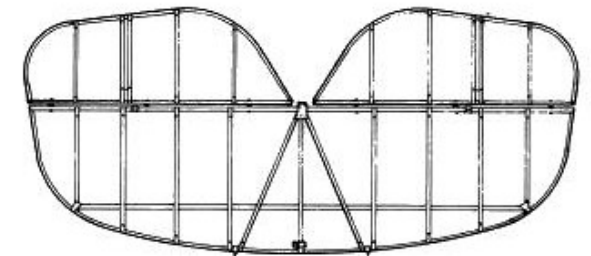
TAIL BOOM (True length)



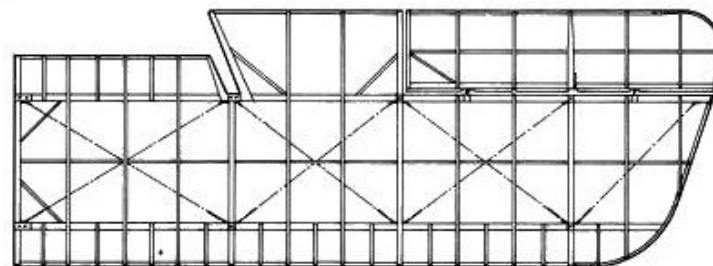
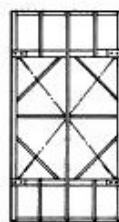
SIDE ELEVATION



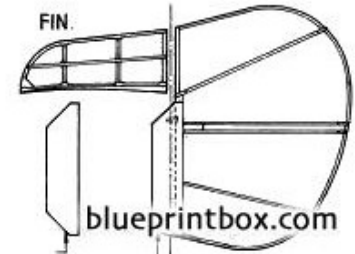
END ELEVATION



TAILPLANE STRUCTURE

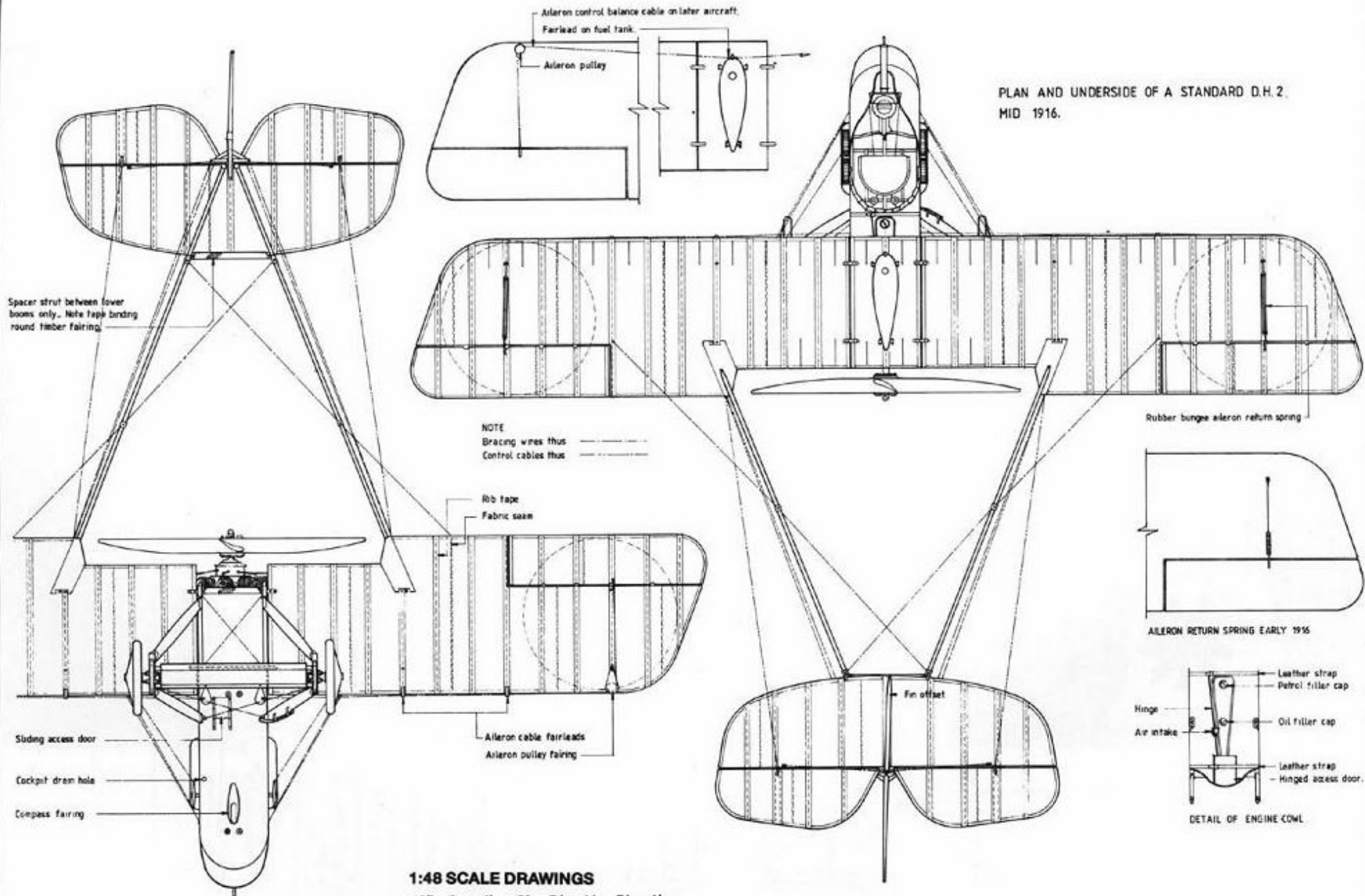


AEROFOIL SECTION.

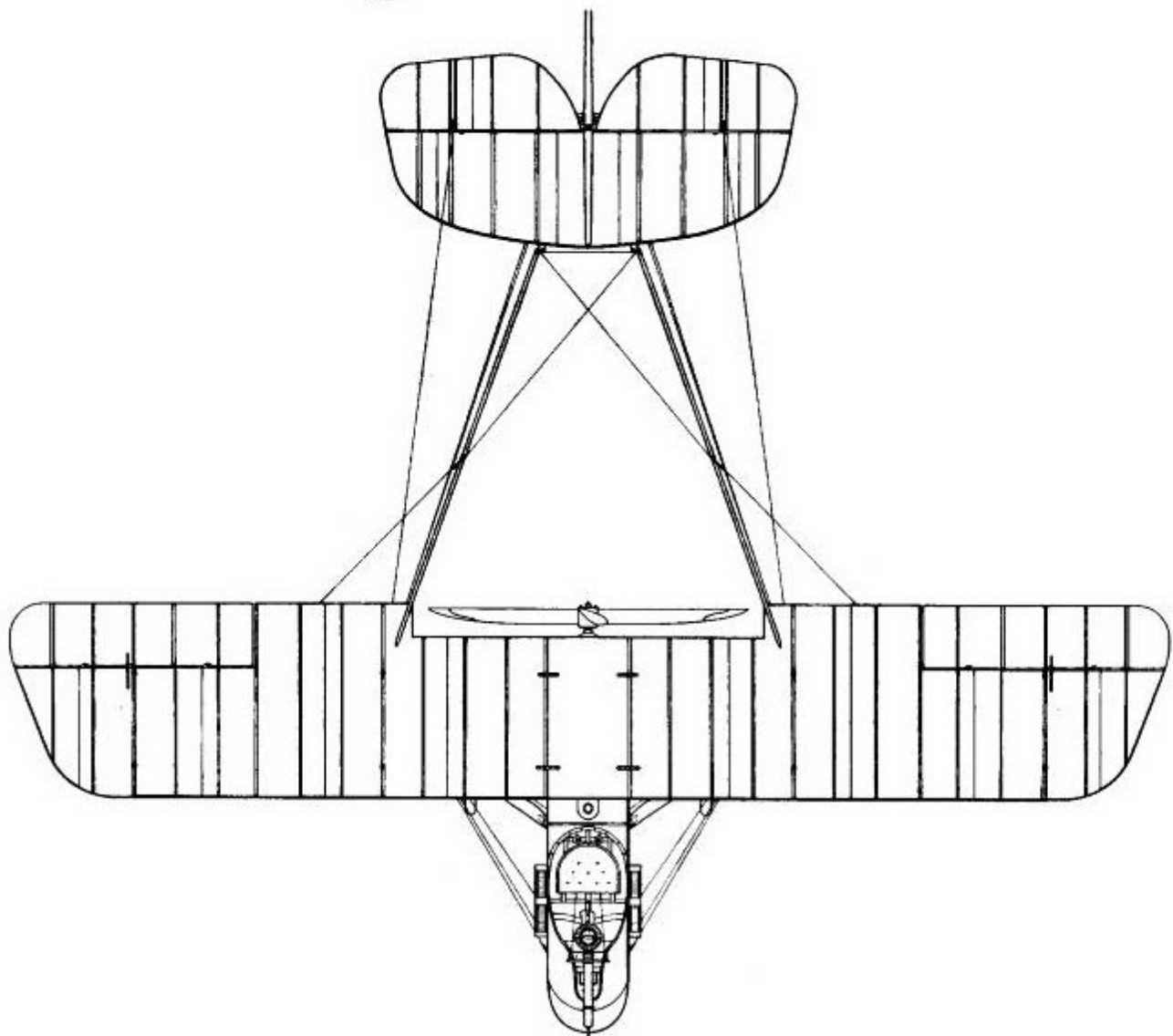
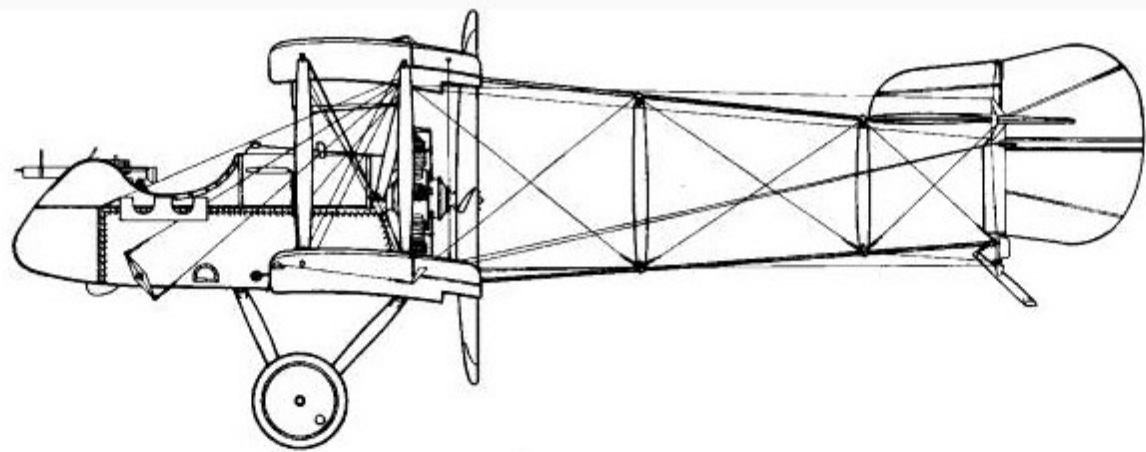


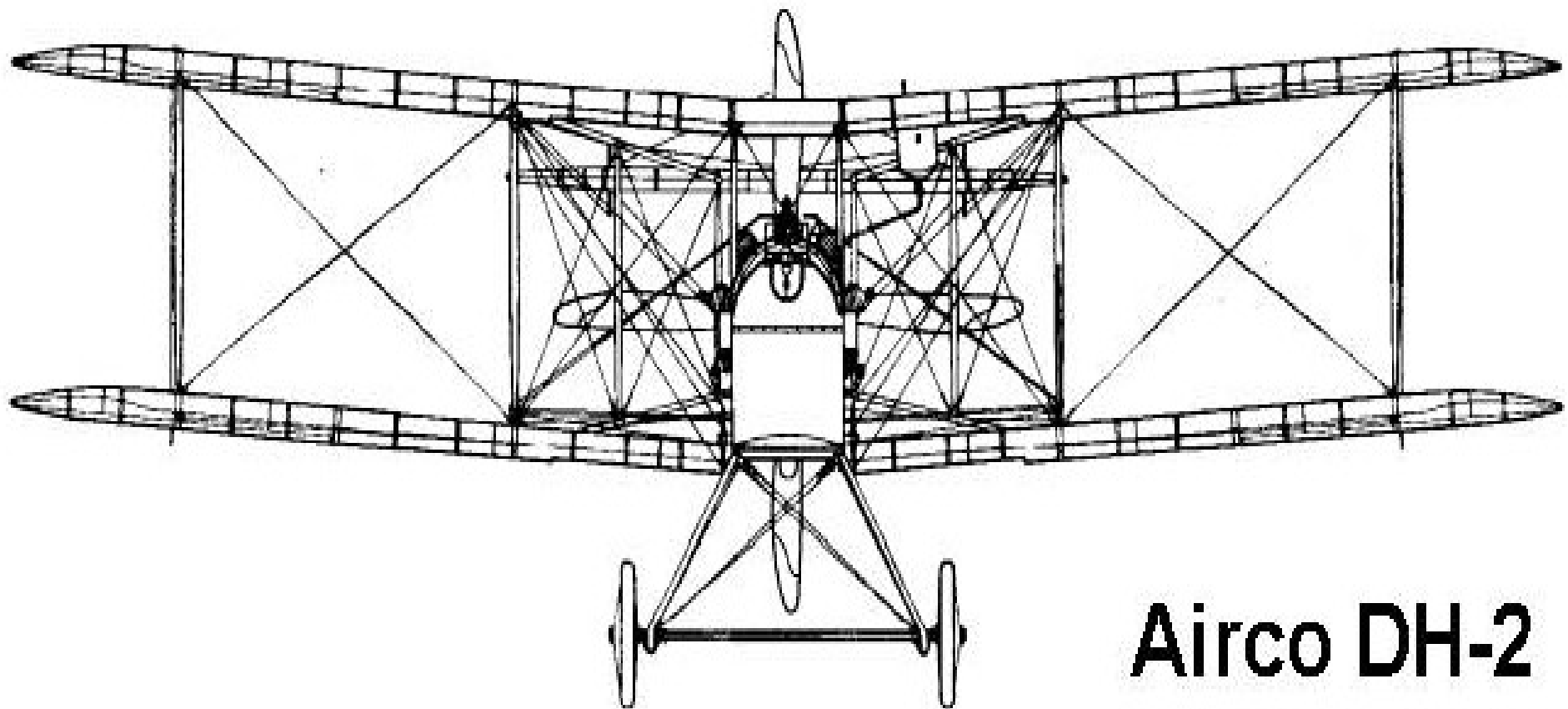
FIN.

PLAN AND UNDERSIDE OF A STANDARD D.H. 2.
MID 1916.



1:48 SCALE DRAWINGS
 12" 0 1' 2' 3' 4' 5' 6'
 100cm 0 1





Airco DH-2



